



Autumn Term 2024: Newsletter 1
Friday 13th September 2024

MOUNT CHARLES SCHOOL

HEADTEACHER UPDATE



It has been wonderful to meet you and your children this week. Thank you for your warm welcome, it has been very much appreciated. Everyone arrived looking smart, fresh and ready to learn, which was fantastic. I have been impressed with the way in which the pupils conduct themselves and how polite they are – lots of them have said “Good Morning” to me and are showing The Mount Charles Way of READY, RESPECTFUL, SAFE. So many children have come to me at the end of the day as they have reached the top of the learn ladder – I have been practicing my ‘Praise Phrases’. I am really enjoying being the new Headteacher at Mount Charles.

Mount Charles Nursery Class has officially opened this week! It has been lovely to meet our new children and welcome them into the Mount Charles family.

This week, it has been wonderful to pop into the ‘Meet the Teacher’ sessions that have taken place this week with more happening next week. If you have any further questions, please speak to the class teachers and phase leaders.

Open Days For 2025 reception intake

Come along and meet our
children and staff.



Contact our school office to book a space

Friday 11th October - 10am and 1:30pm
Wednesday 16th October - 10am, 1:30pm and 5pm
Tuesday 5th November - 10am
Tuesday 12th November - 10am
Wednesday 13th November - 5pm
Thursday 14th November - 10am and 1:30pm



We are delighted to release our Open Days for our September 2025 Reception intake! This intake is for children who were born between 1 September 2020 and 31 August 2021. Please contact our school office to book a space on one of our Open Day sessions.

www.mount-charlessch.org | 01726 73911 | enquiries@mcs.celtrust.org

Morven Road, St Austell. PL25 4PP



PERSONAL DEVELOPMENT

British Values

Democracy is an important value at our school. Pupils have the opportunity to have their voices heard through our School Council who meet regularly. The elections of members of the School Council and Eco Council are based on pupil votes. We should have the results of these next week.

I am also pleased to announce that we will be having a Head Pupil Team at Mount Charles, consisting of 4 Year 6 pupils, giving them the chance to be pupil leaders, and be the leaders of tomorrow. All Year 6 pupils have been invited to stand for election and apply for a position on the team and then successful applicants will be invited to have an interview. In order to be eligible, they must present their reasons why they deserve to be a Head Pupil and submit themselves to questions from their peers and the Senior Leadership Team. I will be able to announce the Head Pupil Team in the next newsletter.

I am excited to reveal the completion of the outdoor area. The elected School Council will be working together to decide how the space will be used– so look out for an update. In addition, our new ECO council will be designing and creating creature homes for around the site, including bird tables, bug hotels etc.

Enrichment:

In a matter of weeks, our Year 6's will be going on their residential trip to London – visiting so many iconic landmarks. If Year 6 parents have any questions, please speak to Mrs Wiltshire or Mrs Nile.

Clubs—You should have received a text message confirming which club your child has been allocated. These begin on Monday and will run until Friday 13th December.

Day	Club	Year Groups	Club Meeting Point	Parents Collection Point
Monday	Choir	3 – 6	Small Hall	Main Gate
Monday	Multiskills / Sports	1 & 2	1TH	Main Gate
Tuesday	4Real Dance	3 – 6	Main Hall	Main Gate
Tuesday	Science	1 & 2	Class 2CD	Main Gate
Wednesday	Girls Football	5 & 6	Class 3SG	Main Gate
Thursday	Football	3 & 4	Class 3SG	Main Gate
Thursday	Arts and Crafts	3 & 4	Class 2CD	Main Gate
Thursday	Netball	5 & 6	Class 5BW	Swimming Gate
Thursday	Arts and Crafts	1 & 2	Class RHM	Main Gate
Friday	Football	5 & 6	Class 5RW	Main Gate

We will be updating parents next week regarding the Musical Theatre Club as per our message earlier this week.

Attendance

Please see further information on the following page regarding the Government policy regarding attendance.



PERSONAL DEVELOPMENT

Safeguarding

We understand that as the children grow older some may want to leave school at the end of the day, without being met by an adult. We would not recommend this before Year 5. In order for this to happen, we must have written permission from a parent or carer. We will be sending new permission slips home in those year groups - please return them if you would like your child to leave the school without meeting an adult. We appreciate that you may have already given consent for this, but we do need some extra detail.

If your child is walking home alone, it would be a good idea to remind them of The Green Cross Code.

The Green Cross Code [Green cross code \(roadwise.co.uk\)](http://roadwise.co.uk)

First find the safest place to cross, stop just before you get to the kerb, look around for traffic and listen, if traffic is coming let it pass, avoid crossing between parked vehicles, when it is safe walk – don't run across the road.

There are also some risks identified by the NSPCC that should be discussed with your child. They are listed below alongside a link that you may find useful.

NSPCC staying safe away from home: <https://www.nspcc.org.uk/keeping-children-safe/away-from-home/>

Risks include:

- Getting lost
- Danger from traffic
- Bullying from other children
- Stranger danger
- Grooming
- Running into gangs
- Exposure to alcohol or drugs

Attendance



This week our attendance 97.1% which is above our target of 97% - what an amazing start to the school year. Well done everyone!

How we celebrate good attendance: Each week, the class with the highest attendance is awarded the attendance trophy and an extra break time the following week. This week's winners are **4SG** with **99.3%**. Well done. Our whole school attendance this week is **97.1%**.

Absence from school: Regular attendance is vital for academic success, as each day missed translates to gaps in knowledge. Missing school also means missing out on vital interactions with friends, which are essential for building social skills, fostering friendships, and feeling a sense of belonging within the school community.



If your child is unable to attend school, please contact the school office via telephone **before 9am**. Please give **full details** of the reason for absence so that our admin team can code the absence appropriately. Please avoid using phrases such as **"poorly"** or **"sick"** and instead give details of symptoms.

Repeat this for **every day** of absence. If you know you may need to request leave from school for **exceptional circumstances**, such as national sports competitions or visa appointments, please complete a leave request form from the office. If you have any questions or queries regarding attendance, please contact Mrs Nile via the school office.

**MOMENTS
MATTER,
ATTENDANCE
COUNTS.**

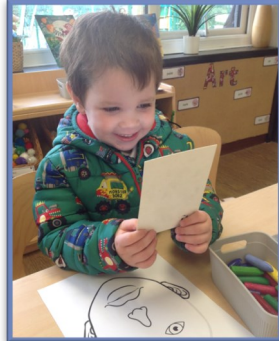
Changes to the **National Penalty Notice Framework** have now come into force.

1. A new national threshold of **10** unauthorised sessions for any reason (equivalent to 5 school days) within a rolling 10 school week period for which a penalty notice must be considered. A penalty fine can be issued for any combination of unauthorised absences over a 10- week rolling period. They can be consecutive or non-consecutive and can span over two terms.
2. An increase in the penalty fine from £60 to £80 if paid in 21 days. If the fine is not paid by the first 21 days, it will rise to £160 if paid within 28 days of being issued.
3. If a 2nd penalty fine is issued to the same parent for the same child within a 3-year rolling period, the fine will automatically rise to £160 with no option to pay the lower rate of £80.
4. If a parent then commits a third offence in a 3-year rolling period, the local authority will need to consider options available to them to improve attendance. This will include a consideration to prosecute under section 444 of the Education Act 1996.
5. The current penalty notice warning letter used for unauthorised absence (not holiday) will be changed to a Notice to Improve.



NURSERY

A warm welcome to our new nursery children and their families. This week, the children have enjoyed exploring their nursery classroom and outdoor area with new friends. We are looking forward to an exciting year ahead together!



EYFS

The children in EYFS have been busy settling into their new school and classroom and have made lots of friends already! They are loving exploring our new indoor and outdoor areas. Next week, they will be going on a tour of their new school. They are very excited to meet lots of members of staff and see different areas of Mount Charles School!



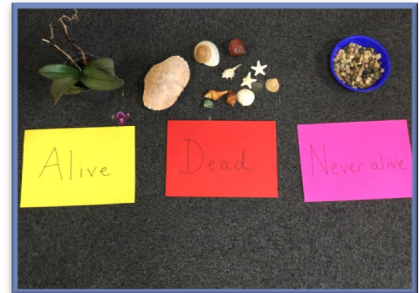
YEAR 1

Year 1 launched their new topic 'Dinosaur Planet' through some exciting activities. The children excavated dinosaurs from sand, melted frozen dinosaur eggs using warm water and put together skeletons of a Tyrannosaurus Rex. The children had lots of fun and cannot wait to learn more about dinosaurs.



YEAR 2

Year 2 have made an amazing start to their topic about rockpools. In science, the children have been thinking about things which are alive, dead and have never been alive. They sorted items into groups and learnt that scientists call this classifying. They also started their computing work using Purple Mash and used their computers to draw a rockpool.



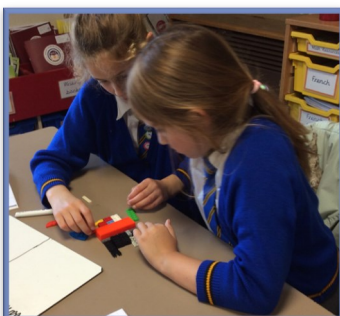
YEAR 3

Year 3 have been working very hard on their handwriting, manners and times tables. In geography, the children have learnt that a compass always points North and using this, they can find 7 other directions. Next week, they will be learning how to use a compass to follow a map.



YEAR 4

Year 4 have started their 'Living things and their habitats' science unit by classifying Lego. They worked in pairs to identify the characteristics of the Lego and decided which feature they would sort it by. They then used this to help them understand classification trees and how animals are grouped into vertebrates and invertebrates.



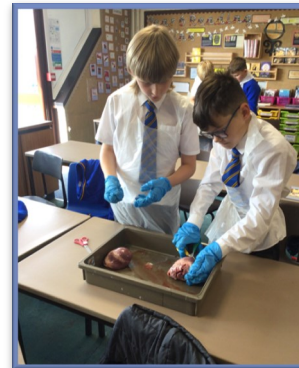
YEAR 5

As part of their 'Off with her head!' topic, Year 5 have been learning about Tudor portraits. The children looked at sketching techniques for drawing faces from the front and the side and then had a go at sketching one of Henry VIII's wives. Some very impressive skills on display!



YEAR 6

As part of their engage session for their topic 'Blood Heart' Year 6 dissected a pig's heart. The children enjoyed looking at the heart, identifying the chambers and finding veins, the aorta and tendons. This gave them a real life look at the heart before they start their science lessons looking at the circulatory system.



ARB

We have been delighted to welcome back all the children at our ARB. Mandy and Alison are learning lots everyday and the children have been busy exploring their new class environment. We are going to find out all about ourselves during the next half term. Look who we met today! Skelly the skeleton.



REMINDEERS

What should my child bring every day?

A named coat—the weather can be changeable

Water bottle

A healthy snack for break time— for example fruit, cereal bar, yogurt, houmous & veg sticks, cheese & crackers.

School Lunches

Please remember to order your child's school lunch. All school lunches **MUST** be ordered in advance by parents /carers on ParentPay. Bookings can be made now until October half term. Cut off for each week is Sunday at midnight.

If your child is entitled to Free School Meals you will still need to order on ParentPay.

If you need help logging onto ParentPay, please contact the office as soon as possible.

Uniform

White polo shirts

Infants—all year, Juniors—summer term only

White shirt or blouse and school tie

Juniors—autumn & spring, polo shirt option for summer

Mount Charles V-neck jumper or cardigan

Grey Trousers

Grey Skirt or Pinafore Dress

Blue & white gingham dress during summer term

Grey Socks

Black school shoes—**NO TRAINERS**

PE Uniform

Mount Charles t-shirt

PLAIN BLACK shorts, leggings or joggers—no patterns or logos

Mount Charles V-neck jumper or cardigan

Trainers

- * No jewellery should be worn in school except for one pair of small stud earrings.
- * Only simple hair bands should be worn, no elaborate pieces. Long hair must be tied back.

Please label all items of clothing to ensure lost items can be returned to their rightful owners.





TOP THREE!



Biggest improvement in accuracy in last 14 days:

- 1st place: Leo Burton**
- 2nd place: Kane Hayward**
- 3rd place: Freddie Newcombe**

Most correct answers given over the last 14 days:



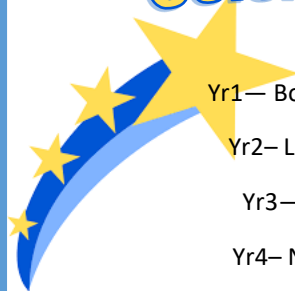
- 1st place: Brynley Gilbert**
- 2nd place: Michael Mutezo**
- 3rd place: Cobie O'Brien**

Biggest improvement in studio speed over the last 14 days:

- 1st place: Sam Lepetit**
- 2nd place: Lauren Derryman**
- 3rd place: Alexis Goodman**



Celebrating



- Yr1— Bonnie, Samuel
- Yr2— Lucy, Hunter
- Yr3— Charlie H
- Yr4— Neelah, Ava
- Yr5— Pearl J
- Yr6— Charlie J, Declan

Success

Our attendance trophy was won by:

This week: 4SG with 99.3%



Attendance!



Diary Dates



TERM DATES

Autumn term 1 2024: Thurs. 5th September 2024 - Thursday 17th October 2024

Autumn term 2 2024: Monday 4th November 2024 - Friday 20th December 2024

Spring term 1 2025: Monday 6th January 2025 - Friday 14th February 2025

Spring term 2 2025: Monday 24th February 2025 - Friday 4th April 2025

Summer term 1 2025: Tuesday 22nd April 2025 - Friday 23rd May 2025

Summer term 2 2025: Monday 2nd June 2025 - Friday 25th July 2025

INSET DAYS: Friday 18th October 2024

Friday 20th June 2025

Monday 23rd June 2025



Hello!

My name is

Lindsay

from the NHS Mental Health Support
Team (MHST) in Schools.



I am an Education Mental Health Practitioner (EMHP) and I work with children who might be feeling sad or worried, to try to help them feel better.

What is an EMHP?

As an EMHP I offer low intensity, early intervention, and prevention within the school community for children and young people experiencing mental health difficulties. I work directly 1-2-1 with children/young people or their parent/carers offering a type of therapy known as CBT (Cognitive Behavioural Therapy) to manage mild symptoms of anxiety, low mood, or behavioural challenges.

I may also deliver psycho-educational groups and workshops with pupils, around topics for example, supporting with school transitions, managing emotions and self-regulation skills.

Within in my role I support a number of primary schools within the area, and I am delighted to be working with Mount Charles primary school every Wednesday afternoon 1pm- 4pm.

If you are worried about your child's mental health

Please contact your school's Designated Mental Health Lead (DMHL)
in the first instance.

Your School Contact is:

Mrs Hann



THURSDAY 26TH SEPTEMBER 2024

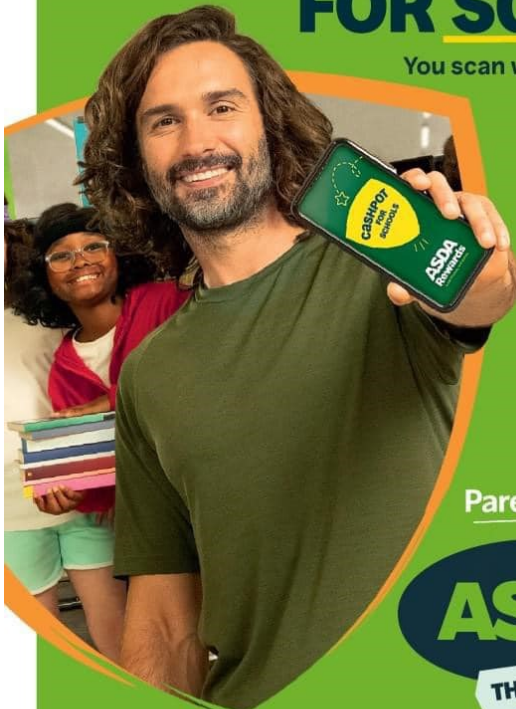
OPEN EVENING



penriceacademy.org/open-event

INTRODUCING CASHPOT FOR SCHOOLS

You scan we donate ££s



CASHPOT
FOR
SCHOOLS



Parentkind

ASDA

THAT'S MORE LIKE IT

Selected stores. Minimum spend £2+. Exclusions apply including Asda Express & George.com. Subject to availability. UK 18+. App & Opt-in required. 0.5% of the value of a customer's eligible shop is donated. Publicly funded primary schools, must register with Parentkind charity 1072833. Full T&Cs at asda.com/cashpotforschools. Rewards T&Cs at asda.com/rewards/terms. Ends 30.11.24

